

LEGEND

- - - - - LIMIT OF WORK
- PROPERTY LINE/RIGHT-OF-WAY
- ▒ CONCRETE CURB
- ▒ PEDESTRIAN CONCRETE PAVING
- ▒ PEDESTRIAN ASPHALT PAVING
- ▒ BENCH WITH BACK
- ▒ PICNIC TABLE
- TRASH RECEPTACLE

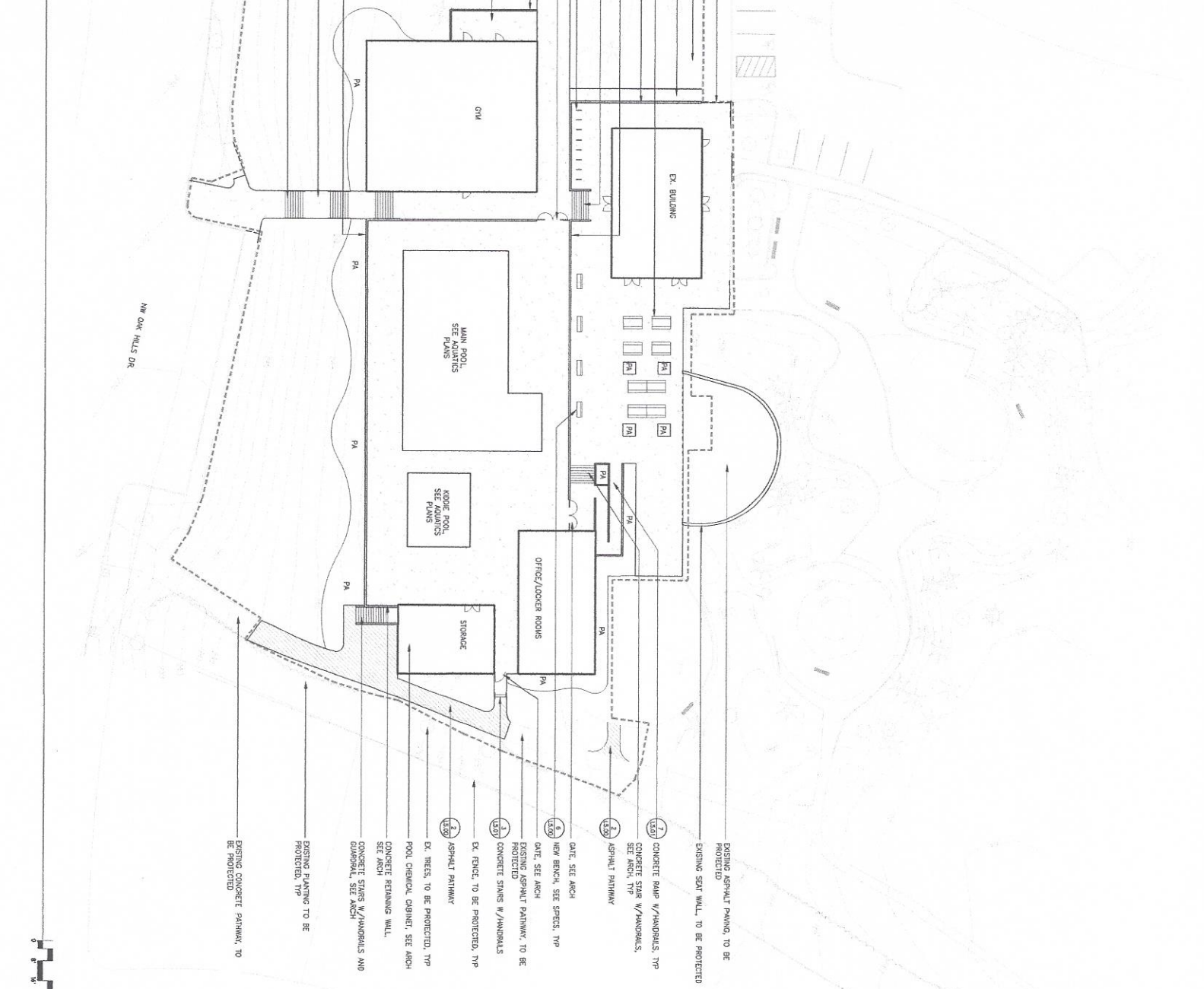
opsi
architecture

503.525.9511
opsiarch.com

ABBREVIATIONS

- ARCH ARCHITECTURAL
- DMG DRAINAGE
- ELC ELECTRICAL
- MCH MECHANICAL
- MECH MECHANICAL
- NOT IN CONTRACT
- SM SIMILAR
- SPECIFICATIONS
- TIPO TYPICAL
- TYP WITH

Oak Hills Homeowners Association
Oak Hills Recreation Center



MATERIALS NOTES

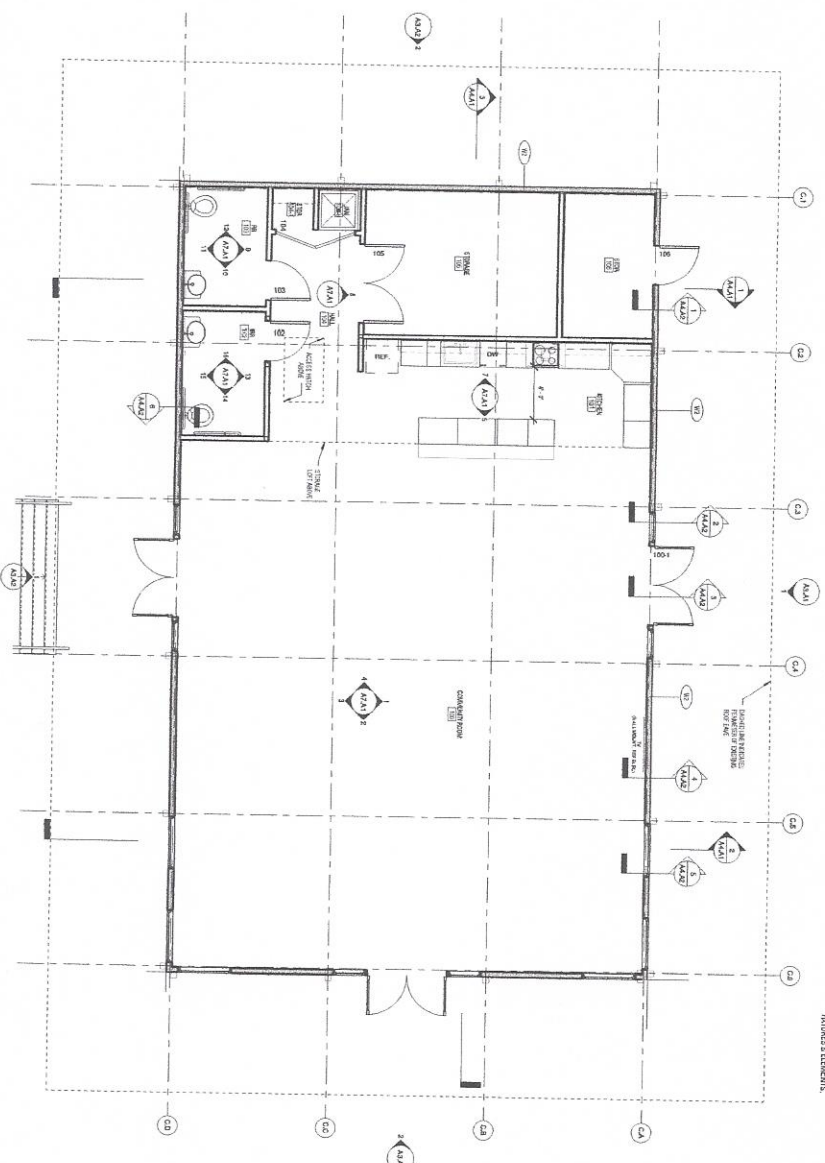
- THIS PLAN IS BASED ON A SURVEY BY JAS. H. ... DATE: 12/21/2014. ... DISCREPANCIES IDENTIFIED ON SITE RELATED TO SURVEY INFORMATION FROM TO INSTALLATION.
- PROTECT EXISTING VEGETATION TO REMAIN. SEE REQUIREMENTS.
- SEE CIVIL DRAWINGS FOR LOCATION OF UTILITIES.
- SEE ELECTRICAL DRAWINGS FOR FURTHER INFORMATION REGARDING SITE LIGHTING AND REQUIREMENTS.
- ALL CONCRETE PAVING TO BE MADE OF HIGH ALBEDO LIGHT COLORED MATERIALS. SEE SPECIFICATIONS.
- COORDINATE WORK WITH OTHER TRADES, INCLUDING B. ... APPROVE JOISTS, STRINGING AND STORAGE, AS WELL AS WELL APPROVEMENTS WITHIN THE RIGHT-OF-WAY.



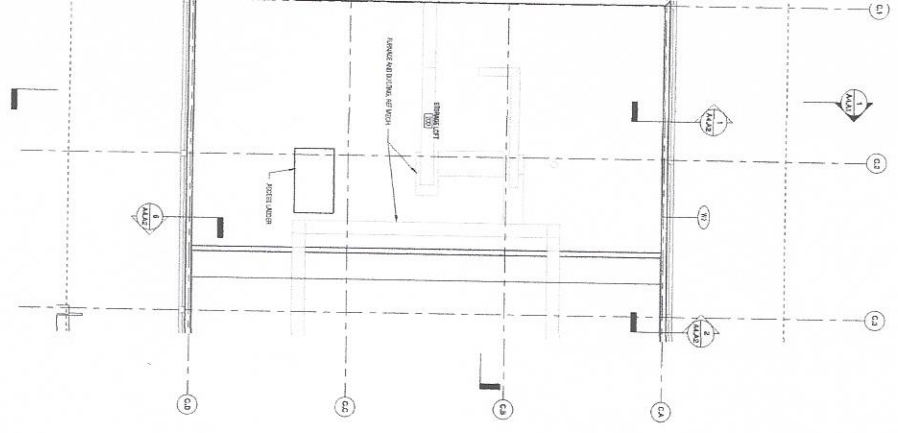
Mapo Team
1000... 503.525.9511

DATE: 11.14.15
DRAWN BY: M.M.M.
SHEET TITLE: Materials Plan
SHEET NUMBER: 4806-01
JOB NUMBER: 12.00

- General Notes - Floor Plan**
- See sheet A027 for notes and details.
 - CONCRETE WALL CONSTRUCTION WITH REINFORCING BARS SHALL BE PERFORMED TO 6'-4" HIGHER STRUCT TO COMBINATION WITH ALL NON-BEARING WALLS TO BE 4'-0" HIGHER.
 - See sheet A027 for notes and wall assemblies.
 - See sheet A027 for details of window assemblies. All window frames shall be installed in accordance with manufacturer's instructions.
 - SEE A027 FOR INFORMATION ON WINDOW INFORMATION.
 - SEE A027 FOR INFORMATION ON WINDOW INFORMATION.
 - SEE A027 FOR INFORMATION ON WINDOW INFORMATION.
 - SEE A027 FOR INFORMATION ON WINDOW INFORMATION.
 - SEE A027 FOR INFORMATION ON WINDOW INFORMATION.
 - SEE A027 FOR INFORMATION ON WINDOW INFORMATION.



1-1 Floor Plan - Community Room - Level 1
1/4" = 1'-0"



1-1 Floor Plan - Community Room - Left Level
1/4" = 1'-0"

Oak Hills Homeowners Association
Oak Hills Recreation Center

2024.06.10
10:00 AM
10:00 AM

NO.	REVISION	DATE

drawn by: _____
date: _____
sheet title: _____
Floor Plan -
Community Room

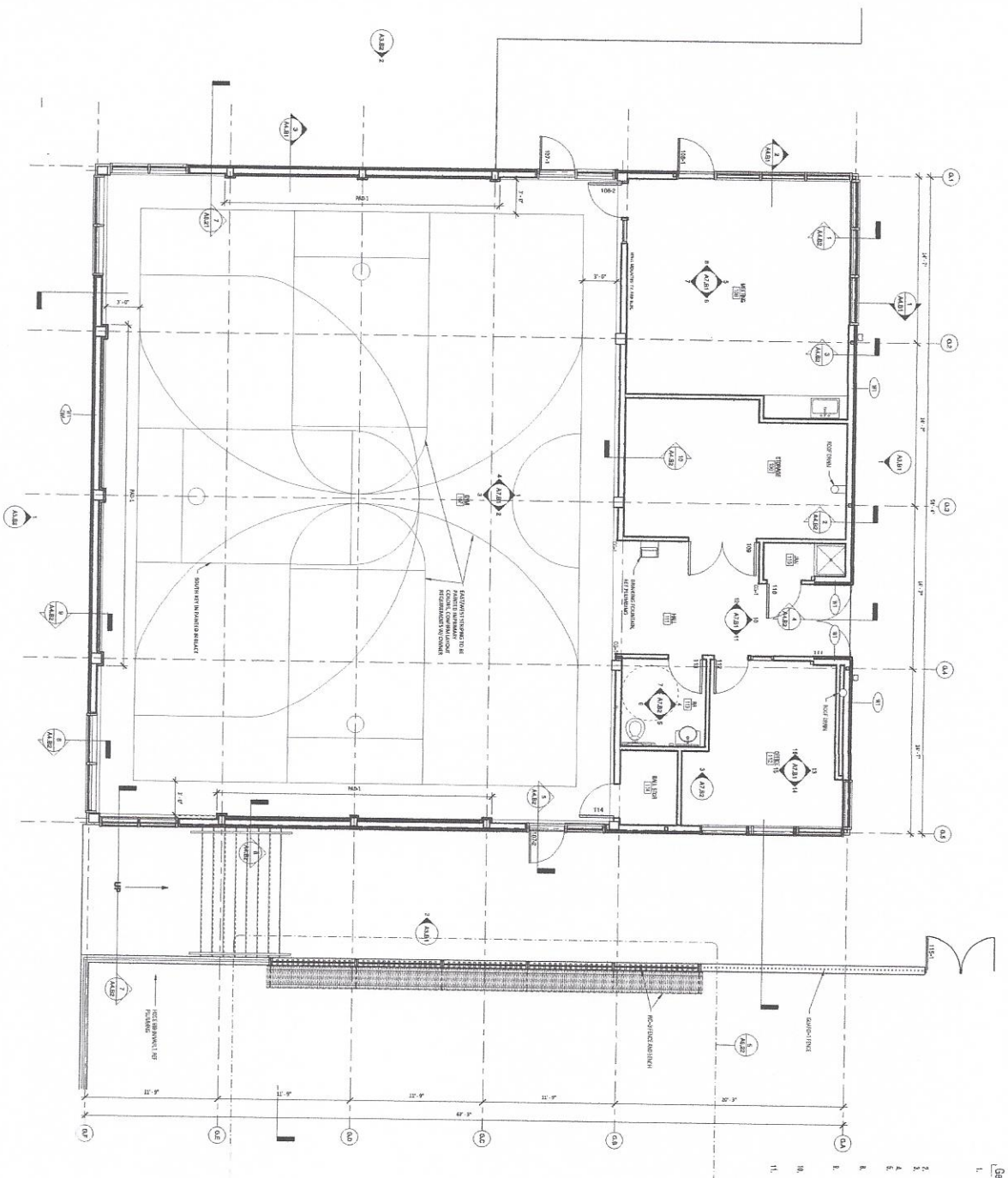
sheet number: _____

A1.A1

job number:
4605-01

General Notes - Floor Plan

1. See Note A22.1 for exterior wall construction. STRUCTURAL TYPE ALL EXTERIOR FINISH WALLS TO BE PAINTED EXTERIORLY COMPANY STD. E-34-1-100L. CONCRETE FINISH WALLS TO BE PAINTED INTERIORLY COMPANY STD. E-34-1-100L.
2. See Note A22.2 for roof and ceiling construction. INTERIOR CEILING SHALL BE 15'0" MIN. HANGERS WITH 1/2" x 4" x 4" @ 12" O.C. WITH 5/8" x 4" x 4" @ 12" O.C. JOISTS. SEE ARCH. S. 01.11.102 FOR CEILING.
3. SEE ARCH. S. 01.11.102 FOR CEILING.
4. SEE ARCH. S. 01.11.102 FOR CEILING.
5. SEE ARCH. S. 01.11.102 FOR CEILING.
6. SEE ARCH. S. 01.11.102 FOR CEILING.
7. SEE ARCH. S. 01.11.102 FOR CEILING.
8. SEE ARCH. S. 01.11.102 FOR CEILING.
9. SEE ARCH. S. 01.11.102 FOR CEILING.
10. SEE ARCH. S. 01.11.102 FOR CEILING.
11. REFER TO SHEET 02.01 FOR WORKING DRAWINGS FOR THE CONSTRUCTION OF THE ROOFING SYSTEMS.



Oak Hills Homeowners Association
 Oak Hills Recreation Center

12/06/2015
 11/20/2015

DATE: 11/20/2015
 DRAWN BY: SHM
 SHEET TITLE: Floor Plan - Gym

BY: J. K. HARRIS, REGISTERED ARCHITECT
 OAK HILLS RECREATION CENTER
 12/06/2015
 PROJECT NO. 15-001

sheet number:

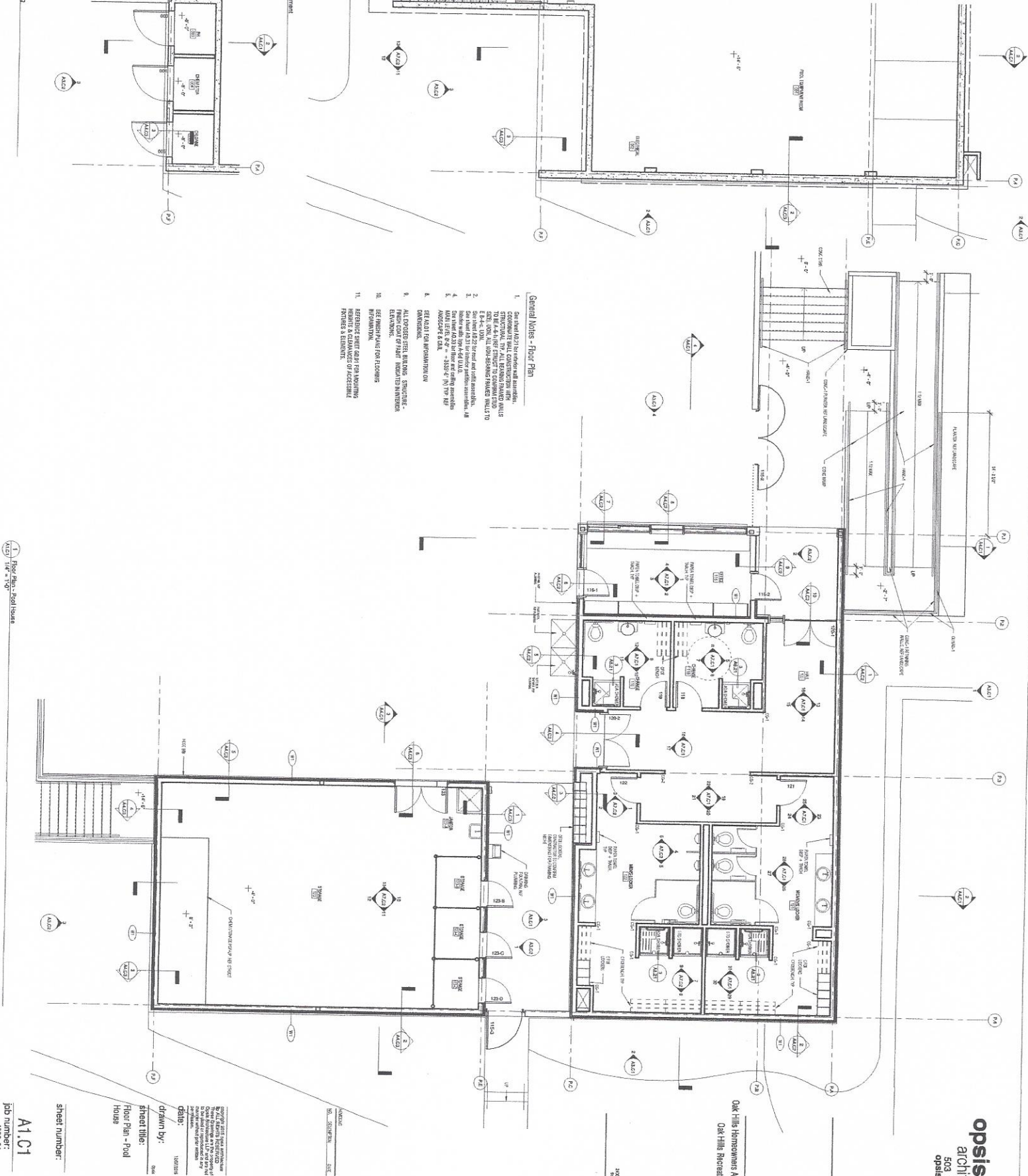
A1.B1

job number:
 4506-01

Oak Hills Homeowners Association
 Oak Hills Recreation Center

DATE: 11/20/15
 DRAWN BY: [Name]
 CHECKED BY: [Name]

- General Notes - Floor Plan**
1. See sheet A1.01 for structural conditions.
 2. COORDINATE WALL CONSTRUCTION WITH OTHER TRADES. ALL EXTERIOR WALLS TO BE CONCRETE. ALL INTERIOR WALLS TO BE GYPSUM BOARD ON STUDS. ALL DOOR AND WINDOW THRESHOLS TO BE ALUMINUM.
 3. SEE SHEET A1.02 FOR ROOF AND CEILING DETAILS.
 4. SEE SHEET A1.03 FOR FLOOR AND CEILING DETAILS.
 5. SEE SHEET A1.04 FOR MECHANICAL AND ELECTRICAL DETAILS.
 6. SEE SHEET A1.05 FOR FINISHES AND MATERIALS.
 7. SEE SHEET A1.06 FOR FINISHES AND MATERIALS.
 8. SEE SHEET A1.07 FOR FINISHES AND MATERIALS.
 9. SEE SHEET A1.08 FOR FINISHES AND MATERIALS.
 10. SEE SHEET A1.09 FOR FINISHES AND MATERIALS.
 11. REFER TO SHEET A1.01 FOR FINISHES AND MATERIALS.



Sheet number:
A1.01
 Job number:
 4606-01

PRICING SET - 12/07/2015 - NOT FOR CONSTRUCTION